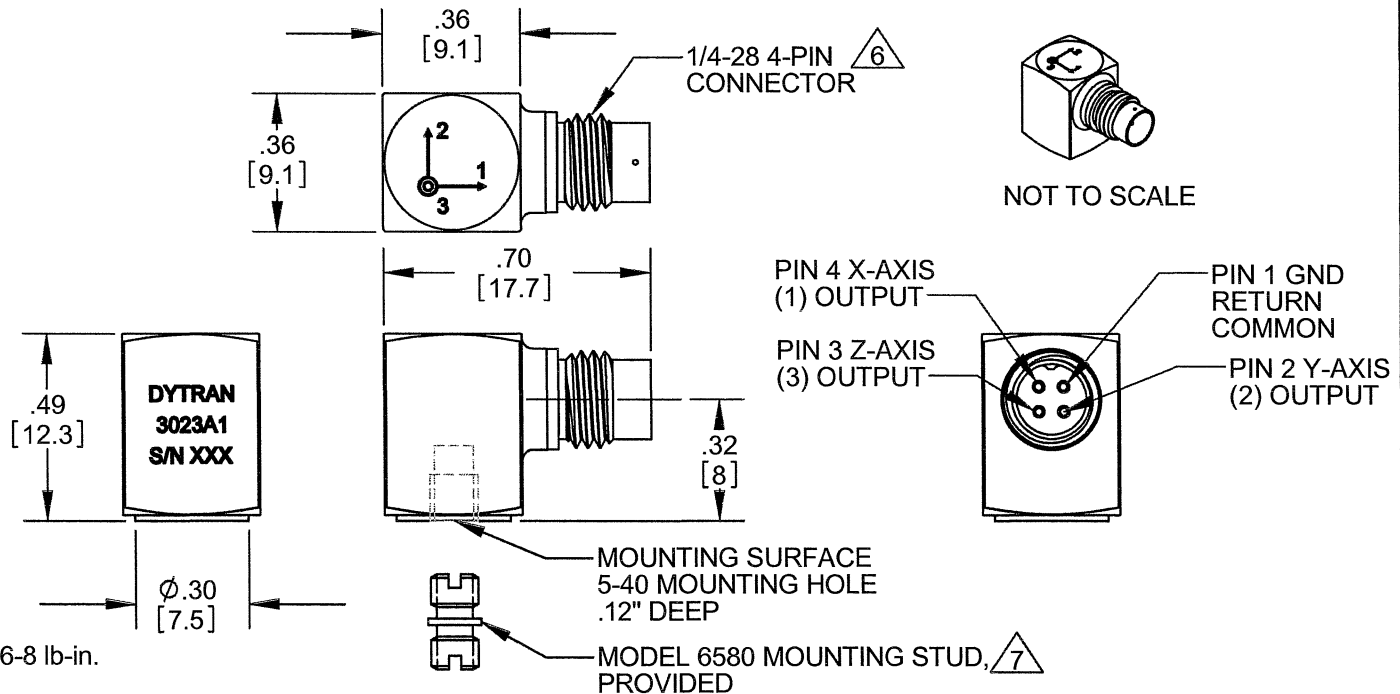


PROPRIETARY AND CONFIDENTIAL		REVISIONS					
THE INFORMATION CONTAINED IN THIS DRAWING IS THE SOLE PROPERTY OF DYTRAN INSTRUMENTS INC. ANY REPRODUCTION IN PART OR AS A WHOLE WITHOUT THE WRITTEN PERMISSION OF DYTRAN INSTRUMENTS INC. IS PROHIBITED		REV.	ECN	DESCRIPTION	BY/DATE	CHK	APPR
		A	6250	ADDED NOTES 5, 6, & 7, REFORMATTED	RA, 12/04/09	ey	



7 RECOMMENDED MOUNTING TORQUE 6-8 lb-in.

6 MATES WITH DYTRAN 6811AXX OR 6824AXX CABLE (XX=LENGTH IN FEET)

5. OPERATIONAL TEMPERATURE: RANGE -60° TO +250°F
4. SENSITIVITY: 5mV/G NOMINAL
3. WEIGHT: 4 GRAMS NOM
2. ARROWS INDICATE ACCELERATION DIRECTION FOR POSITIVE OUTPUT
1. MATERIAL: TITANIUM ALLOY

NOTES: UNLESS OTHERWISE SPECIFIED.

MOUNTING RECOMMENDATIONS:
 PREPARE SURFACE AT LEAST $\phi .30$ [7.5]
 SURFACE FLATNESS MUST BE EQUAL OR BETTER THAN .001 TIR. TAP 5-40 UNC-2B ∇ .120 MIN

UNLESS OTHERWISE SPECIFIED: INTERPRET DIM & TOL PER ASME Y14.5M - 1994. REMOVE BURRS. COUNTERSINK INTERNAL THDS 90° TO MAJOR DIA. CHAM EXT THDS 45° TO MINOR DIA. THD LENGTHS AND DEPTHS ARE FOR MIN FULL THDS. THDS PER MIL-S-7742. DIMENSIONS APPLY AFTER FINISHING. ALL MACHINED SURFACES. TOTAL RUNOUT WITHIN .005. BREAK SHARP EDGES .005 TO .010. MACHINED FILLET RADII .005 TO .015. WELDING SYMBOLS PER AWS A2.4. ABBREVIATIONS PER MIL-STD-12.	UNLESS OTHERWISE SPECIFIED: DIMENSIONS ARE IN INCHES. DIMENSIONS IN BRACKETS [] ARE IN MILLIMETERS TOLERANCES ARE: INCHES METRIC ANGLES .XX ± .03 .X ± 0.8 ± 1° .XXX ± .010 .XX ± 0.25
USED ON	NEXT ASSY
APPLICATION	
THIRD ANGLE PROJECTION USA	

CONTRACT NO.	
APPROVALS	
ORIG	PML 8/18/2005
CHK	PML 8/18/2005
APP	PML 8/18/05
DATE	
MATERIAL	
FINISH	
DO NOT SCALE DRAWING	



MASTER ONLY IF IN RED

Chatsworth, CA

TITLE: **OUTLINE/INSTALLATION DRAWING, MODEL 3023A4**

SIZE A	CAGE CODE 2W033	DWG. NO. 127-3023A4	REV A
SCALE: NONE		SOLIDWORKS	SHEET 1 OF 1



- **STUD MOUNT**
- **EXCELLENT LINEARITY**
- **ULTRA LOW WEIGHT**

PHYSICAL

Weight, Max.
Connector
Mounting Provision
Material, Housing/Connector
Sensing Element
Element Style

ENGLISH		SI	
0.14	oz	4.0	grams
4- PIN		4- PIN	
5-40 Tapped Hole		5-40 Tapped Hole	
Titanium Alloy		Titanium Alloy	
Quartz		Quartz	
Shear		Shear	

PERFORMANCE

Sensitivity, -10 / +15% [1]
Range for ± 5 Volts Output
Frequency Response
Resonant Frequency
Broad Band Resolution
Spectral Noise
Linearity [2]
Maximum Transverse Sensitivity
Strain Sensitivity @ 250µε

5	mV/g	0.5	mV/m/s ²
±1000	g	±9806.65	m/s ²
1.5 to 4000	Hz	1.5 to 4000	Hz
±5% -5 / +15%		1.5 to 10000	Hz
> 40	kHz	> 40	kHz
0.014	Grms	0.137	m/s ² rms
0.006	µGrms/v(Hz)	0.059	µm/s ² rms/v(Hz)
10Hz	µGrms/v(Hz)	0.0196	µm/s ² rms/v(Hz)
100Hz	µGrms/v(Hz)	0.0039	µm/s ² rms/v(Hz)
1000Hz	µGrms/v(Hz)	0.00098	µm/s ² rms/v(Hz)
10000Hz	µGrms/v(Hz)	0.00078	µm/s ² rms/v(Hz)
1	% F.S.	1	% F.S.
5	%	5	%
0.006	g/µε	0.06	m/s ² /µε

ENVIRONMENTAL

Maximum Vibration
Maximum Shock
Temperature Range
Seal
Magnetic Sensitivity at 100 Gauss

±1000	Gpeak	±9807	m/s ² peak
5000	Gpeak	49033	m/s ² peak
-60 to +250	°F	-51 to +121	°C
Hermetic		Hermetic	
0.00005	g/Gauss	4.905	m/s ² /T

ELECTRICAL

Supply Current Range [3]
Compliance Voltage Range
Output Impedance, Typ
Bias Voltage
Discharge Time Constant
Electrical Isolation

2 to 20	mA	2 to 20	mA
18 to 30	Volts	18 to 30	Volts
100	Ω	100	Ω
7 to 11	VDC	7 to 11	VDC
0.3 to 1.5	Sec	0.3 to 1.5	Sec
Case Grounded	GΩ, min	Case Grounded	GΩ, min

This family also includes:

Model	Sensitivity (mV/g)	Frequency Response (Hz)	Mounting	Operating Temp (°F)
3023A	10 (-10 to +15%)	1.5 to 10000 (-5 to +15%)	Adhesive	-60 to +250
3023A1	10 (-10 to +15%)	1.5 to 10000 (-5 to +15%)	5-40 Tapped Hole	-60 to +250
3023A2	10 (-10 to +15%)	1.5 to 10000 (-5 to +15%)	10-32 Tapped Hole	-60 to +250
3023A3	5 (-10 to +15%)	1.5 to 10000 (-5 to +15%)	Adhesive	-60 to +250
3023A5	1 (±5%)	1.5 to 10000 (-5 to +15%)	Adhesive	-60 to +250
3023A6	5 (-10 to +15%)	1.5 to 10000 (-5 to +15%)	10-32 Tapped Hole	-60 to +250
3023A9	1 (±10%)	1.5 to 10000 (-5 to +15%)	10-32 Tapped Hole	-60 to +250

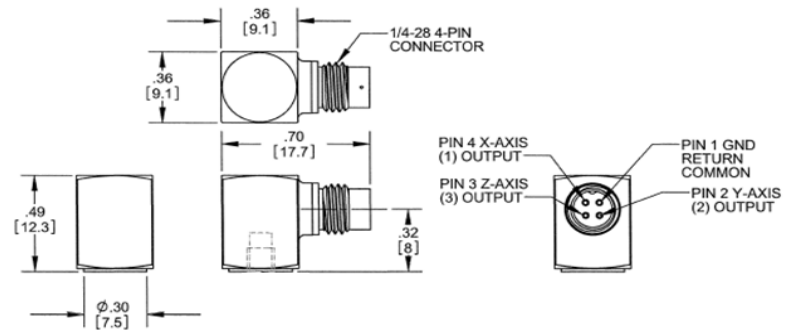
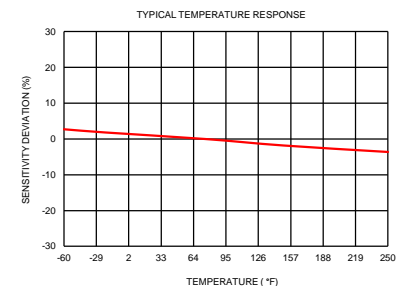
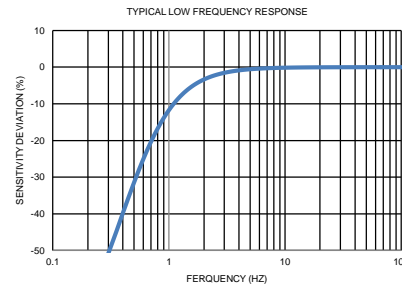
Refer to the performance specifications of the products in this family for detailed description

Supplied Accessories:

- 1) Accredited calibration certificate (ISO 17025)
- 2) Model 6580 Mounting Stud, Quantity 1

Notes:

- [1] Measured at 100Hz, 1 Grms per ISA RP 37.2.
- [2] Measure using zero-based straight line method, % of F.S. or any lesser range.
- [3] Do not apply power to this system without current limiting, 20 mA MAX. To do so will destroy the IC charge amplifier.
- [4] In the interest of constant product improvement, we reserve the right to change specifications without notice.



Units on the line drawing are in inches, units in brackets are in millimeters. Refer to 127-3023A4 for more information.

